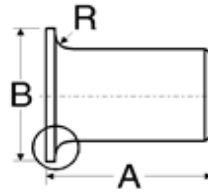
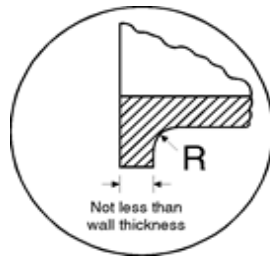


Lap Joint Stub Ends - MSS SP-43



Note:

Type A is shown.

Type B has a square corner, as indicated by the maximum dimension R in the table below

Nominal Pipe Size	Common OD at Bevel		Length Dimension		Diameter of Lap Dimension		Radius of Fillet Dimension				Weight 40S/STD Lbs/piece
			A		B		R				
	in	mm	in	mm	in	mm	Type A for Lap Joint Flange, max		Type B for Slip-on Flange, max		
1/2	0.84	21.00	2.00	50.80	1.38	35.00	0.12	3.05	0.03	0.76	0.20
3/4	1.05	27.00	2.00	50.80	1.69	43.00	0.12	3.05	0.03	0.76	0.26
1	1.32	33.00	2.00	50.80	2.00	51.00	0.12	3.05	0.03	0.76	0.33
1 1/4	1.66	42.00	2.00	50.80	2.50	64.00	0.19	4.83	0.03	0.76	0.44
1 1/2	1.90	48.00	2.00	50.80	2.88	73.00	0.25	6.35	0.03	0.76	0.62
2	2.38	60.00	2.50	63.50	3.62	92.00	0.31	7.87	0.03	0.76	0.90
2 1/2	2.88	73.00	2.50	63.50	4.12	105.00	0.31	7.87	0.03	0.76	1.45
3	3.50	89.00	2.50	63.50	5.00	127.00	0.38	9.65	0.03	0.76	1.96
3 1/2	4.00	102.00	3.00	76.20	5.50	140.00	0.38	9.65	0.03	0.76	-
4	4.50	114.00	3.00	76.20	6.19	157.00	0.44	11.18	0.03	0.76	3.32
5	5.56	141.00	3.00	76.20	7.31	186.00	0.44	11.18	0.06	1.52	5.85
6	6.62	168.00	3.50	88.90	8.50	216.00	0.50	12.70	0.06	1.52	6.64
8	8.62	219.00	4.00	101.60	10.62	270.00	0.50	12.70	0.06	1.52	11.48
10	10.75	273.00	5.00	127.00	12.75	324.00	0.50	12.70	0.06	1.52	19.98
12	12.75	324.00	6.00	152.40	15.00	381.00	0.50	12.70	0.06	1.52	29.37
14	14.00	356.00	6.00	152.40	16.25	413.00	0.50	12.70	0.06	1.52	31.97
16	16.00	406.00	6.00	152.40	18.50	470.00	0.50	12.70	0.06	1.52	35.95
18	18.00	457.00	6.00	152.40	21.00	533.00	0.50	12.70	0.06	1.52	42.46
20	20.00	508.00	6.00	152.40	23.00	584.00	0.50	12.70	0.06	1.52	46.95
24	24.00	610.00	6.00	152.40	27.25	692.00	0.50	12.70	0.06	1.52	56.43

Note

Dimensions quoted in mm are equivalents of the inch dimensions (i.e. 25.4 x in).

Metric dimensions are not specified in MSS SP-43.

Length A and Radius R are applicable for Schedule 40S or thinner.

Contact faces of stub ends shall have a modified spiral or concentric serration.

Weights are approximate and based on manufacturers' data (where available) for Schedule 40S/Standard fittings.

FITTINGS THROUGH 100" PIPE SIZE ARE AVAILABLE

Sumitec Int'l, Inc

Phone (877)-837-9618 Fax (866) 311-5335 email:sumitecsales@comcast.net

We also Supply Carbon and Stainless Steel Flanges and Pipes