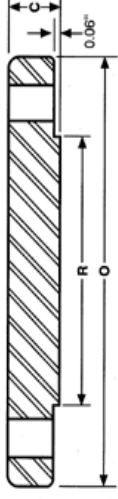
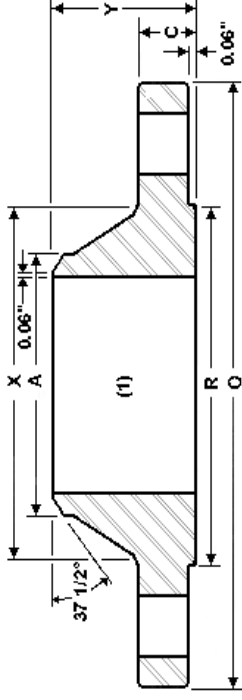


INDUSTRY STANDARD CLASS 75 WN & BLIND FLANGES



Nominal Size	Outside Diameter	Thickness		Diameter Raised Face	Hub Diameter	Length Thru Hub	Dia of Bolt Circle	Diameter Of Bolt Holes	Number of Bolt Holes	Weight (LBS)	
		WN	Blind							WN	Blind
26	31.50	1.25	1.25	28.63	27.13 (X)	3.00	29.63	1.00	32	98	265
28	33.50	1.25	1.25	30.63	29.13	3.00	31.63	1.00	36	105	300
30	35.50	1.25	1.38	32.63	31.13	3.00	33.63	1.00	36	110	370
32	38.25	1.25	1.50	35.00	33.38	3.25	36.16	1.13	36	140	470
34	40.25	1.25	1.50	37.00	35.38	3.25	38.13	1.13	40	150	520
36	42.25	1.25	1.63	39.00	37.38	3.25	40.13	1.13	40	160	620
42	49.00	1.25	1.88	45.50	43.75	3.50	46.75	1.25	48	210	970
48	55.00	1.25	2.13	51.50	49.75	3.75	52.75	1.25	52	240	1375
54	61.25	1.38	2.38	57.75	56.00	4.00	59.00	1.25	64	310	1925
60	67.25	1.63	2.63	63.75	62.00	4.38	65.00	1.25	72	400	2575
66	74.00	1.88	2.88	70.13	68.00	4.88	71.50	1.38	72	560	3400
72	80.00	2.25	3.13	76.13	74.00	5.25	77.50	1.38	80	700	4350

1. All dimensions are in inches

2. Can be furnished with flat face

3. Bore dimension to be specified by customer

4. Hub diameter at bevel to be specified by customer

Large Diameter Flanges Through 260" Can Be Furnished.

Sumitec Int'l, Inc

Phone (877)-837-9618 Fax (866) 311-5335 email:sumitecsales@comcast.net

We also Supply Carbon and Stainless Steel Butt Weld Fittings and Pipe!