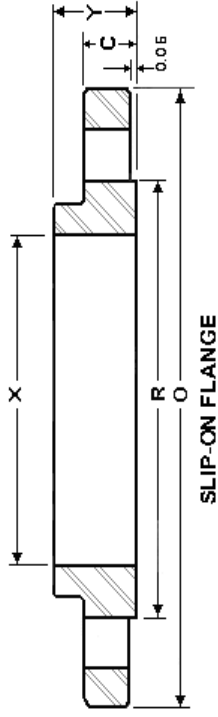
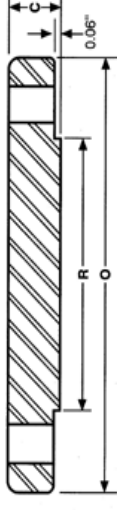


# INDUSTRY STANDARD CLASS 75 SLIP-ON & BLIND FLANGES



SLIP-ON FLANGE



Nominal Size	Outside Diameter	Thickness		Diameter Raised Face	Hub Diameter	Bore	Length Thru Hub	Diam. of Bolt Circle	Diameter Of Bolt Holes	Number of Bolt Holes	Weight (LBS)	
		Slip-on	Blind								Slip-On	Blind
	(O)	C	C	R	(X)		Y					
26	33.00	1.25	1.25	30.00	28.50	26.25	2.25	31.00	1.00	32	120	290
28	35.00	1.25	1.38	32.00	30.50	28.25	2.25	33.00	1.00	36	140	360
30	37.00	1.25	1.38	34.00	32.50	30.25	2.25	35.00	1.00	36	150	405
32	39.50	1.25	1.50	36.25	34.63	32.25	2.50	37.38	1.13	40	170	500
34	41.50	1.25	1.63	38.25	36.63	34.25	2.50	39.38	1.13	40	180	600
36	43.50	1.25	1.63	40.25	38.63	36.25	2.50	41.38	1.13	44	190	660
42	50.00	1.25	1.88	46.50	44.75	42.25	0.75	47.75	1.25	48	235	1000
48	56.00	1.25	2.13	52.50	50.75	48.25	2.88	53.75	1.25	56	270	1450
54	62.50	1.38	2.38	59.00	57.25	54.25	3.13	60.25	1.25	68	335	2000
60	68.50	1.63	2.63	65.00	63.25	60.25	3.63	66.25	1.25	72	450	2675
66	75.50	1.75	2.88	71.63	69.50	66.25	4.00	73.00	1.38	72	590	3550
72	81.50	2.00	3.13	77.63	75.50	72.25	4.50	79.00	1.38	80	730	4500

1. All dimensions are in inches

2. Can also be furnished with flat face

*Large Diameter Flanges Through 260" Can Be Furnished.*

## Sumitec Int'l, Inc

Phone (877)-837-9618 Fax (866) 311-5335 email:sumitecsales@comcast.net

**We also Supply Carbon and Stainless Steel Butt Weld Fittings and Pipes**