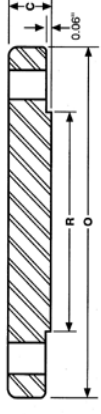
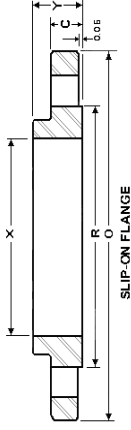
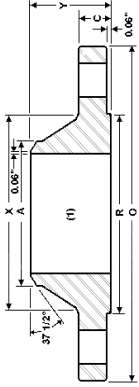


# INDUSTRY STANDARD CLASS 350 WN SLIP-ON & BLIND FLANGES



Nominal Size	Outside Diameter	Thickness		Diameter Raised face	Hub Diameter	Bore Slip-On	Length Thru Hub		Diameter Bolt Holes	Dia of Holes	Number of Bolt Holes	Weight (LBS)	
		Weld Neck	Slip On				WN	SO				WN	SO
	O			R	X		Y	Y					
26	32.75	2.50	2.75	29.50	27.88	26.25	5.00	4.50	30.63	1.13	28	245	580
28	34.75	2.50	2.88	31.50	29.88	28.25	5.00	4.50	32.63	1.13	28	260	750
30	37.00	2.63	3.00	33.75	32.13	30.25	5.25	4.75	34.88	1.13	32	305	890
32	39.00	2.75	3.25	35.75	34.13	32.25	5.50	5.00	36.88	1.13	36	340	1050
34	41.00	2.88	3.38	37.75	36.13	34.25	5.50	5.13	38.88	1.13	40	375	1225
36	43.75	3.13	3.63	40.25	38.50	36.25	6.30	5.63	41.50	1.25	40	480	1500
38	45.75	3.13	3.75	42.25	40.50	38.25	6.13	5.63	43.50	1.25	40	510	1700
40	47.75	3.25	4.00	44.25	42.50	40.25	6.25	5.88	45.50	1.25	44	540	1975
42	50.00	3.50	4.13	46.50	44.75	42.25	6.50	6.13	47.75	1.25	48	640	2225
44	52.75	3.75	4.38	48.88	46.75	44.25	6.75	6.75	50.25	1.38	44	760	2625
46	54.75	4.25	4.75	50.88	48.75	46.25	7.25	7.25	52.25	1.38	48	880	2950
48	56.75	4.25	4.75	52.88	50.75	48.25	7.25	7.25	54.25	1.38	48	920	3300
52	61.50	4.25		57.25	55.00	52.25	7.50		58.75	1.50	52	1075	
54	63.50	4.50	4.75	59.25	57.00	54.25	7.75	8.25	60.75	1.50	52	1200	1150
60	69.50	4.50	5.00	65.50	63.00	60.25	8.00	8.50	66.75	1.50	60	1325	1450
66	77.00	4.00		72.38	70.00	66.25	8.50		74.00	1.63	60	1675	
72	83.00	4.00		78.38	76.00	72.25	9.00		80.00	1.63	72	1850	

1. All dimensions are in inches
2. Can be furnished with flat face

3. Customer to specify bore dimension
4. Customer to specify hub at bevel dim.

**Large Diameter Flanges Through 260" Can Be Furnished.**

## Sumitec Int'l, Inc

Phone (877)-837-9618 Fax (866) 311-5335 email:sumitecsales@comcast.net

**We also Supply Carbon and Stainless Steel Butt Weld Fittings and Pipes**