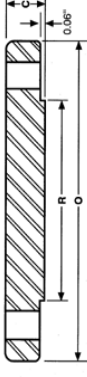
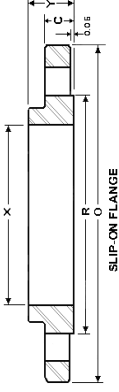
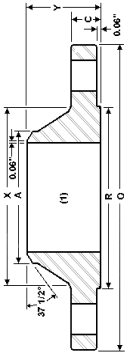


INDUSTRY STANDARD CLASS 175 WN SLIP-ON & BLIND FLANGES



Nominal Size	Outside Diameter	Thickness		Diameter Raised face	Hub Diameter	Bore Slip-On	Length Thru Hub		Diameter Bolt Holes	Dia of Holes	Number of Bolt Holes	Weight (LBS)	
		Weld Neck	Slip On				WN	SO				WN	SO
26	31.50	1.38	1.38	29.00	27.63	26.25	Y	Y	29.88	0.88	28	120	105
28	33.50	1.38	1.38	31.00	29.63	28.25	3.38	2.75	31.88	0.88	28	130	115
30	35.50	1.38	1.38	33.25	31.88	30.25	3.63	2.75	34.13	0.88	36	150	130
32	37.75	1.38	1.38	35.25	33.88	32.25	3.63	2.75	36.13	0.88	36	160	140
34	40.25	1.50	1.75	37.38	35.88	34.25	3.75	3.38	38.38	1.00	36	195	200
36	42.25	1.50	1.75	39.38	37.88	36.25	3.75	3.38	40.38	1.00	36	205	210
38	44.25	1.75	2.00	41.38	39.88	38.25	4.13	3.75	42.38	1.00	36	245	250
40	46.25	1.75	2.00	43.38	41.88	40.25	4.13	4.00	44.38	1.00	40	255	270
42	49.00	2.00	2.38	45.75	44.13	42.25	4.50	4.38	46.88	1.13	40	340	365
44	51.00	2.00	2.38	47.75	46.13	44.25	4.50	4.38	48.88	1.13	40	360	380
46	53.00	2.00	2.38	49.75	48.13	46.25	4.50	4.63	50.88	1.13	40	375	410
48	55.00	2.25	2.63	51.75	50.13	48.25	4.88	4.88	52.88	1.13	44	430	460
50	57.00	2.25	2.63	53.75	52.13	50.25	4.88	4.88	54.88	1.13	44	450	480
52	59.50	2.63	3.00	56.00	54.25	52.25	5.38	5.38	57.25	1.25	44	560	600
54	61.50	2.63	3.00	58.00	56.25	54.25	5.38	5.38	59.25	1.25	44	580	620
60	67.50	2.75	3.13	64.00	62.25	60.25	5.75	5.88	65.25	1.25	48	680	730
66	73.50	3.13	4.00	70.00	68.50	66.25	6.13	6.88	71.25	1.25	56	830	1000
72	80.00	3.63	5.00	76.50	74.50	72.25	6.63	8.00	77.75	1.25	64	1075	1400

- All dimensions are in inches
- Can be furnished with flat face

- Customer to specify bore dimension
- Customer to specify hub diameter at bevel

Large Diameter Flanges Through 260" Can Be Furnished.

Sumitec Int'l, Inc

Phone (877)-837-9618 Fax (866) 311-5335 email:sumitecsales@comcast.net

We also Supply Carbon and Stainless Steel Butt Weld Fittings and Pipes