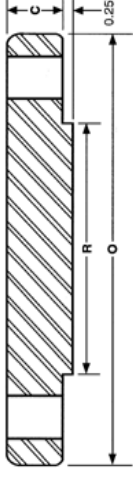


ANSI B16.5 Class 900 Blind Flanges



Nominal Size	Outside Diameter O	Thickness C	Dia Of Raised Face R	No. Of Holes	Dia. Of Holes	Dia. Of Bolts	Bolt Circle Diameter	Approx. Weight (Lbs)
1/2"	4.75	0.88	1.38	4	0.88	0.75	3.25	4
3/4"	5.12	1.00	1.69	4	0.88	0.75	3.50	6
1"	5.88	1.13	2.00	4	1.00	0.88	4.00	8
1 1/4"	6.25	1.13	2.50	4	1.00	0.88	4.38	9
1 1/2"	7.00	1.25	2.88	4	1.12	1.00	4.88	13
2"	8.50	1.50	3.63	8	1.00	0.88	6.50	25
2 1/2"	9.62	1.63	4.13	8	1.12	1.00	7.50	35
3"	9.50	1.50	5.00	8	1.00	0.88	7.50	29
4"	11.50	1.75	6.19	8	1.25	1.13	9.25	54
5"	13.75	2.00	7.31	8	1.38	1.25	11.00	87
6"	15.00	2.19	8.50	12	1.25	1.13	12.50	115
8"	18.50	2.50	10.63	12	1.50	1.38	15.50	200
10"	21.50	2.75	12.75	16	1.50	1.38	18.50	290
12"	24.00	3.13	15.00	20	1.50	1.38	21.00	415
14"	25.25	3.38	16.25	20	1.62	1.50	22.00	520
16"	27.75	3.50	18.50	20	1.75	1.63	24.25	600
18"	31.00	4.00	21.00	20	2.00	1.88	27.00	850
20"	33.75	4.25	23.00	20	2.12	2.00	29.50	1075
24"	41.00	5.50	27.25	20	2.62	2.50	35.50	2025

Sumitec Int'l, Inc

Phone (877)-837-9618 Fax (866) 311-5335 email:sumitecsales@comcast.net

We also Supply Carbon and Stainless Steel Buttweld Fittings and Pipes