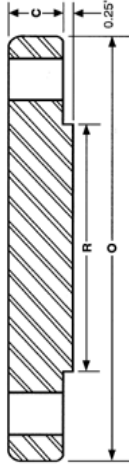


ANSI B16.5 Class 600 Blind Flanges



Nominal Size	Outside Diameter O	Thickness C	Dia Of Raised Face R	No. Of Holes	Dia. Of Holes	Dia. Of Bolts	Bolt Circle Diameter	Approx. Weight (Lbs)
1/2"	3.75	0.56	1.38	4	0.63	0.50	2.62	2
3/4"	4.63	0.63	1.69	4	0.75	0.63	3.25	3
1"	4.88	0.69	2.00	4	0.75	0.63	3.50	4
1 1/4"	5.25	0.81	2.50	4	0.75	0.63	3.88	5
1 1/2"	6.13	0.88	2.88	4	0.88	0.75	4.50	8
2"	6.50	1.00	3.63	8	0.75	0.63	5.00	10
2 1/2"	7.50	1.13	4.13	8	0.88	0.75	5.88	15
3"	8.25	1.25	5.00	8	0.88	0.75	6.62	20
3 1/2"	9.00	1.38	5.50	8	1.00	0.88	7.25	29
4"	10.75	1.50	6.19	8	1.00	0.88	8.50	41
5"	13.00	1.75	7.31	8	1.12	1.00	10.50	68
6"	14.00	1.88	8.50	12	1.12	1.00	11.50	86
8"	16.50	2.19	10.63	12	1.25	1.13	13.75	140
10"	20.00	2.50	12.75	16	1.38	1.25	17.00	230
12"	22.00	2.63	15.00	20	1.38	1.25	19.25	295
14"	23.75	2.75	16.25	20	1.50	1.38	20.75	355
16"	27.00	3.00	18.50	20	1.62	1.50	23.75	495
18"	29.25	3.25	21.00	20	1.75	1.63	25.75	630
20"	32.00	3.50	23.00	24	1.75	1.63	28.50	810
24"	37.00	4.00	27.25	24	2.00	1.88	33.00	1250

Sumitec Int'l, Inc

Phone (877)-837-9618 Fax (866) 311-5335 email:sumitecsales@comcast.net

We also Supply Carbon and Stainless Steel Buttweld Fittings and Pipes