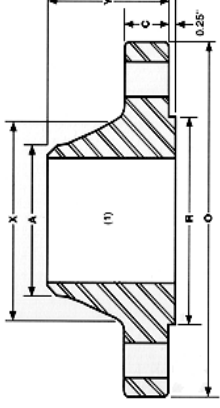


# ANSI B16.5 Class 400 Weld-Neck Flanges



Nominal Size	Outside Diameter O	Thickness C	Dia Of Raised Face R	Dia. Of Hub At Base X	Dia. Of Hub at welding Point A	Length Thru Hub Y	No. Of Holes	Dia. of holes Holes	Dia. Of Bolts	Dia. Of Bolt Circle	Approx. Weight (Lbs)
1/2"	3.50	0.44	1.38	1.19	0.84	1.88	4	0.62	1/2	2.38	2
3/4"	3.88	0.50	1.69	1.50	1.05	2.06	4	0.62	1/2	2.75	2
1"	4.25	0.56	2.00	1.94	1.32	2.19	4	0.62	1/2	3.12	3
1 1/4"	4.62	0.62	2.50	2.31	1.66	2.25	4	0.62	1/2	3.50	3
1 1/2"	5.00	0.69	2.88	2.56	1.90	2.44	4	0.62	1/2	3.88	4
2"	6.00	0.75	3.62	3.06	2.38	2.50	4	0.75	5/8	4.75	6
2 1/2"	7.00	0.88	4.12	3.56	2.88	2.75	4	0.75	5/8	5.50	8
3"	7.50	0.94	5.00	4.25	3.50	2.75	4	0.75	5/8	6.00	10
3 1/2"	8.50	0.94	5.50	4.81	4.00	2.81	8	0.75	5/8	7.00	12
4"	10.00	1.38	6.19	5.75	4.50	3.50	8	1.00	7/8	7.88	35
5"	11.00	1.50	7.31	7.00	5.56	4.00	8	1.00	7/8	9.25	43
6"	12.50	1.62	8.50	8.12	6.63	4.06	12	1.00	7/8	10.62	57
8"	15.00	1.88	10.62	10.25	8.63	4.62	12	1.12	1	13.00	89
10"	17.50	2.12	12.75	12.62	10.75	4.88	16	1.25	1 1/8	15.25	125
12"	20.50	2.25	15.00	14.75	12.75	5.38	16	1.38	1 1/4	17.75	175
14"	23.00	2.38	16.25	16.75	14.00	5.88	20	1.38	1 1/4	20.25	230
16"	25.50	2.50	18.50	19.00	16.00	6.00	20	1.50	1 3/8	22.50	295
18"	28.00	2.62	21.00	21.00	18.00	6.50	24	1.50	1 3/8	24.75	350
20"	30.50	2.75	23.00	23.12	20.00	6.62	24	1.62	1 1/2	27.00	425
24"	36.00	3.00	27.25	27.62	24.00	6.88	24	1.88	1 3/4	32.00	620

**Sumitec Int'l, Inc**

Phone (877)-837-9618 Fax (866) 311-5335 email:sumitecsales@comcast.net

**We also Supply Carbon and Stainless Steel Buttweld Fittings and Pipes**