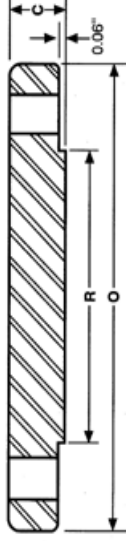


ANSI B16.5 Class 300 Blind Flanges



Nominal Size	Outside Diameter O	Thickness C	Dia. of Raised Face R	No. Of Holes	Dia. Of Holes	Dia. Of Bolts	Bolt Circle Diameter	Approx. Weight (Lbs)
1/2"	3.75	0.56	1.38	4	0.63	1/2	2.63	2
3/4"	4.63	0.63	1.69	4	0.75	5/8	3.25	3
1"	4.88	0.69	2.00	4	0.75	5/8	3.50	3
1 1/4"	5.25	0.75	2.50	4	0.75	5/8	3.88	4
1 1/2"	6.13	0.81	2.88	4	0.88	3/4	4.50	6
2"	6.50	0.88	3.63	8	0.75	5/8	5.00	8
2 1/2"	7.50	1.00	4.13	8	0.88	3/4	5.88	12
3"	8.25	1.13	5.00	8	0.88	3/4	6.63	16
3 1/2"	9.00	1.19	5.50	8	0.88	3/2/5	7.25	21
4"	10.00	1.25	6.19	8	0.88	3/4	7.88	27
5"	11.00	1.38	7.31	8	0.88	3/4	9.25	35
6"	12.50	1.44	8.50	12	0.88	3/4	10.63	50
8"	15.00	1.63	10.63	12	1.00	7/8	13.00	81
10"	17.50	1.88	12.75	16	1.13	1	15.25	124
12"	20.50	2.00	15.00	16	1.25	1 1/8	17.75	185
14"	23.00	2.13	16.25	20	1.25	1 1/8	20.25	250
16"	25.50	2.25	18.50	20	1.38	1 1/4	22.50	295
18"	28.00	2.38	21.00	24	1.38	1 1/4	24.75	395
20"	30.50	2.50	23.00	24	1.38	1 1/4	27.00	505
24"	36.00	2.75	27.25	24	1.63	1 1/2	32.00	790

Sumitec Int'l, Inc

Phone (877)-837-9618 Fax (866) 311-5335 email:sumitecsales@comcast.net

We also Supply Carbon and Stainless Steel Buttweld Fittings and Pipes