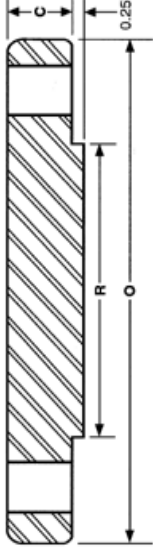


ANSI B16.5 Class 2500 Blind Flanges



Nominal Size	Outside Diameter O	Thickness C	Dia Of Raised Face R	No. Of Holes	Dia. Of Holes	Dia. Of Bolts	Bolt Circle Diameter	Approx. Weight (Lbs)
1/2"	5.25	1.19	1.38	4.00	0.88	3/4	3.50	7
3/4"	5.50	1.25	1.69	4.00	0.88	3/4	3.75	8
1"	6.25	1.38	2.00	4.00	1.00	7/8	4.25	11
1 1/4"	7.25	1.50	2.50	4.00	1.13	1	5.13	17
1 1/2"	8.00	1.75	2.88	4.00	1.25	1 1/8	5.75	23
2"	9.25	2.00	3.63	8.00	1.13	1	6.75	39
2 1/2"	10.50	2.25	4.13	8.00	1.25	1 1/8	7.75	56
3"	12.00	2.63	5.00	8.00	1.38	1 1/4	9.00	86
4"	14.00	3.00	6.19	8.00	1.63	1 1/2	10.75	135
5"	16.50	3.63	7.31	8.00	1.88	1 3/4	12.75	225
6"	19.00	4.25	8.50	8.00	2.13	2	14.50	345
8"	21.75	5.00	10.63	12.00	2.13	2	17.25	530
10"	26.50	6.50	12.75	12.00	2.63	2 1/2	21.25	1025
12"	30.00	7.25	15.00	12.00	2.88	2 3/4	24.38	1464

Sumitec Int'l, Inc

Phone (877)-837-9618 Fax (866) 311-5335 email:sumitecsales@comcast.net

We also Supply Carbon and Stainless Steel Butt Weld Fittings and Pipes