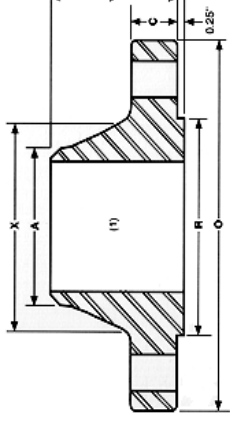


# ANSI B16.5 Class 2500 Weld-Neck Flanges



Nominal Size	Outside Diameter O	Thickness C	Dia Of Raised Face R	Dia. Of Hub At Base X	Dia. Of Hub at welding Point A	Length Thru Hub Y	No. Of Holes	Dia. of holes Holes	Dia. Of Bolts	Dia. Of Bolt Circle	Approx. Weight (Lbs)
1/2"	5.25	1.19	1.38	1.69	0.84	2.88	4	0.88	3/4	3.50	7
3/4"	5.50	1.25	1.69	2.00	1.05	3.12	4	0.88	3/4	3.75	8
1"	6.25	1.38	2.00	2.25	1.32	3.50	4	1.00	7/8	4.25	12
1 1/4"	7.25	1.50	2.50	2.88	1.66	3.75	4	1.12	1	5.12	17
1 1/2"	8.00	1.75	2.88	3.12	1.90	4.38	4	1.25	1 1/8	5.75	25
2"	9.25	2.00	3.62	3.75	2.38	5.00	8	1.12	1	6.75	42
2 1/2"	10.50	2.25	4.12	4.50	2.88	5.62	8	1.25	1 1/8	7.75	52
3"	12.00	2.62	5.00	5.25	3.50	6.62	8	1.38	1 1/4	9.00	94
4"	14.00	3.00	6.19	6.50	4.50	7.50	8	1.62	1 1/2	10.75	145
5"	16.50	3.62	7.31	8.00	5.56	9.00	8	1.88	1 3/4	12.75	245
6"	19.00	4.25	8.50	9.25	6.63	10.75	8	2.12	2	14.50	380
8"	21.75	5.00	10.62	12.00	8.63	12.50	12	2.12	2	17.25	580
10"	26.50	6.50	12.75	14.75	10.75	16.50	12	2.62	2 1/2	21.25	1075
12"	30.00	7.25	15.00	17.38	12.75	18.25	12	2.88	2 3/4	24.38	1525

## Sumitec Int'l, Inc

Phone (877)-837-9618 Fax (866) 311-5335 email:sumitecsales@comcast.net

We also Supply Carbon and Stainless Steel Butt-weld Fittings and Pipes