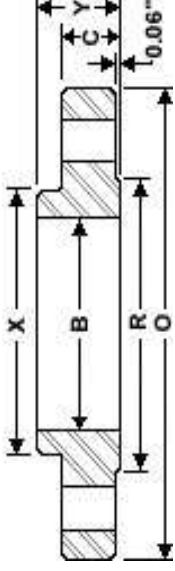


ANSI B16.5 Class 150 Slip-On Flanges



Nominal Size	Outside Diameter O	Thickness C	Dia Of Raised Face R	Dia. Of Hub At Base X	Length Thru Hub Y	Inside Diameter B	No. Of Holes	Dia. of holes	Dia. Of Bolts	Dia. Of Bolt Circle	Approx. Weight (Lbs)
1/2"	3.50	0.44	1.38	1.19	0.62	0.88	4	0.62	1/2	2.38	1
3/4"	3.88	0.50	1.69	1.5	0.62	1.09	4	0.62	1/2	2.75	2
1"	4.25	0.56	2.00	1.94	0.69	1.36	4	0.62	1/2	3.12	2
1 1/4"	4.62	0.62	2.50	2.31	0.81	1.70	4	0.62	1/2	3.50	3
1 1/2"	5.00	0.69	2.88	2.56	0.88	1.95	4	0.62	1/2	3.88	3
2"	6.00	0.75	3.62	3.06	1.00	2.44	4	0.75	5/8	4.75	5
2 1/2"	7.00	0.88	4.12	3.56	1.12	2.94	4	0.75	5/8	5.50	7
3"	7.50	0.94	5.00	4.25	1.19	3.57	4	0.75	5/8	6.00	8
3 1/2"	8.50	0.94	5.50	4.81	1.25	4.07	8	0.75	5/8	7.00	11
4"	9.00	0.94	6.19	5.31	1.31	4.57	8	0.75	5/8	7.50	13
5"	10.00	0.94	7.31	6.44	1.44	5.66	8	0.88	3/4	8.50	15
6"	11.00	1.00	8.50	7.56	1.56	6.72	8	0.88	3/4	9.50	19
8"	13.50	1.12	10.62	9.69	1.75	8.72	8	0.88	3/4	11.75	30
10"	16.00	1.19	12.75	12.00	1.94	10.88	12	1.00	7/8	14.25	43
12"	19.00	1.25	15.00	14.38	2.19	12.88	12	1.00	7/8	17.00	64
14"	21.00	1.38	16.25	15.75	2.25	14.14	12	1.12	1	18.75	90
16"	23.50	1.44	18.50	18.00	2.50	16.16	16	1.12	1	21.25	98
18"	25.00	1.56	21.00	19.88	2.69	18.18	16	1.25	1 1/8	22.75	130
20"	27.50	1.69	23.00	22.00	2.88	20.20	20	1.25	1 1/8	25.00	165
24"	32.00	1.88	27.25	26.12	3.25	24.25	20	1.38	1 1/4	29.50	220

Sumitec Int'l, Inc

Phone (877)-837-9618 Fax (866) 311-5335 email:sumitecsales@comcast.net

We also Supply Carbon and Stainless Steel Butt Weld Fittings and Pipes