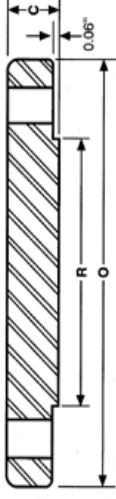


# ANSI B16.5 Class 150 Blind Flanges



Nominal Size	Outside Diameter O	Thickness C	Dia Of Raised Face R	No. Of Holes	Dia. Of Holes	Dia. Of Bolts	Bolt Circle Diameter	Approx. Weight (Lbs)
1/2"	3.50	0.44	1.38	4	0.62	1/2	2.38	1
3/4"	3.88	0.50	1.69	4	0.62	1/2	2.75	2
1"	4.25	0.56	2.00	4	0.62	1/2	3.12	2
1 1/4"	4.62	0.62	2.50	4	0.62	1/2	3.50	3
1 1/2"	5.00	0.68	2.88	4	0.62	1/2	3.88	4
2"	6.00	0.75	3.62	4	0.75	5/8	4.75	5
2 1/2"	7.00	0.88	4.12	4	0.75	5/8	5.50	7
3"	7.50	0.94	5.00	4	0.75	5/8	6.00	9
3 1/2"	8.50	0.94	5.50	8	0.75	5/8	7.00	13
4"	9.00	0.94	6.19	8	0.75	5/8	7.50	17
5"	10.00	0.94	7.31	8	0.88	3/4	8.50	20
6"	11.00	1.00	8.50	8	0.88	3/4	9.50	26
8"	13.50	1.12	10.62	8	0.88	3/4	11.75	45
10"	16.00	1.19	12.75	12	1.00	7/8	14.25	70
12"	19.00	1.25	15.00	12	1.00	7/8	17.00	110
14"	21.00	1.38	16.25	12	1.12	1	18.75	140
16"	23.50	1.44	18.50	16	1.12	1	21.25	180
18"	25.00	1.56	21.00	16	1.25	1 1/8	22.75	220
20"	27.50	1.69	23.00	20	1.25	1 1/8	25.00	285
24"	32.00	1.88	27.25	20	1.38	1 1/4	29.50	430

## Sumitec Int'l, Inc

Phone (877)-837-9618 Fax (866) 311-5335 email:sumitecsales@comcast.net

We also Supply Carbon and Stainless Steel Butt Weld Fittings and Pipes