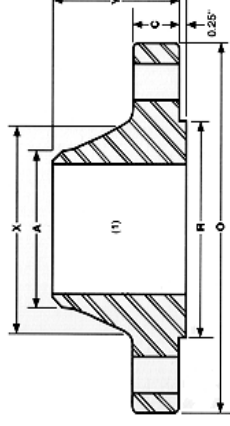


# ANSI B16.5 Class 1500 Weld-Neck Flanges



Nominal Size	Outside Diameter O	Thickness C	Dia Of Raised Face R	Dia. Of Hub At Base X	Dia. Of Hub at welding Point A	Length Thru Hub Y	No. Of Holes	Dia. of holes	Dia. Of Bolts	Dia. Of Bolt Circle	Approx. Weight (Lbs)
1/2"	4.75	0.88	1.38	1.50	0.84	2.38	4	0.88	3/4	3.25	5
3/4"	5.12	1.00	1.69	1.75	1.05	2.75	4	0.88	3/4	3.50	6
1"	5.88	1.12	2.00	2.06	1.32	2.88	4	1.00	7/8	4.00	9
1 1/4"	6.25	1.12	2.50	2.50	1.66	2.88	4	1.00	7/8	4.38	10
1 1/2"	7.00	1.25	2.88	2.75	1.90	3.25	4	1.12	1	4.88	13
2"	8.50	1.50	3.62	4.12	2.38	4.00	8	1.00	7/8	6.50	25
2 1/2"	9.62	1.62	4.12	4.88	2.88	4.12	8	1.12	1	7.50	36
3"	10.50	1.88	5.00	5.25	3.50	4.62	8	1.25	1 1/8	8.00	48
4"	12.25	2.12	6.19	6.38	4.50	4.88	8	1.38	1 1/4	9.50	73
5"	14.75	2.88	7.31	7.75	5.56	6.12	8	1.62	1 1/2	11.50	130
6"	15.50	3.25	8.50	9.00	6.63	6.75	12	1.50	1 3/8	12.50	165
8"	19.00	3.62	10.62	11.50	8.63	8.38	12	1.75	1 5/8	15.50	275
10"	23.00	4.25	12.75	14.50	10.75	10.00	12	2.00	1 7/8	19.00	455
12"	26.50	4.88	15.00	17.75	12.75	11.12	16	2.12	2	22.50	690
14"	29.50	5.25	16.25	19.50	14.00	11.75	16	2.38	2 1/4	25.00	940
16"	32.50	5.75	18.50	21.75	16.00	12.25	16	2.62	2 1/2	27.75	1250
18"	36.00	6.38	21.00	23.50	18.00	12.88	16	2.88	2 3/4	30.50	1625
20"	38.75	7.00	23.00	25.25	20.00	14.00	16	3.12	3	32.75	2050
24"	46.00	8.00	27.25	30.00	24.00	16.00	16	3.62	3 1/2	39.00	3325

## Sumitec Int'l, Inc

Phone (877)-837-9618 Fax (866) 311-5335 email:sumitecsales@comcast.net

We also Supply Carbon and Stainless Steel Butt-weld Fittings and Pipes