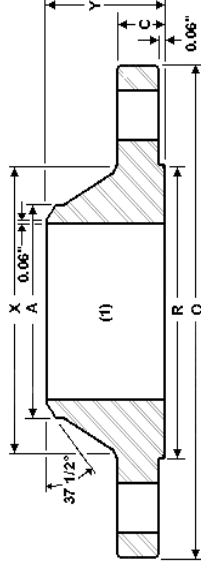


INDUSTRY STANDARD CLASS 125 WELDNECK FLANGES

COMMONLY REFERRED TO AS LARGE DIAMETER 150 FLANGES



Nominal Size	Outside Diameter O	Thickness C	Length thru Hub Y	Diameter of Hub X	Diameter of Raised Face R	Diameter Of Hub at Bev. A	Diameter of Bolt Circle	Number of Bolt Holes	Diameter of Bolt Holes	Weight (Lbs)
26	34.25	2.00	5.00	28.50	29.50	26.00	31.75	24	1.38	265
28	36.50	2.06	5.06	30.75	31.50	28.00	34.00	28	1.38	295
30	38.75	2.13	5.13	32.75	33.75	30.00	36.00	28	1.38	340
32	41.75	2.25	5.25	35.00	36.00	32.00	38.50	28	1.63	410
34	43.75	2.31	5.31	37.00	38.00	34.00	34.25	32	1.63	440
36	46.00	2.38	5.38	39.25	40.25	36.00	42.75	32	1.63	495
38	48.75	2.38	5.38	41.75	42.25	38.00	45.25	32	1.63	570
40	50.75	2.50	5.50	43.75	44.25	40.00	47.25	36	1.63	620
42	53.00	2.63	5.63	46.00	47.00	42.00	49.50	36	1.63	710
44	55.25	2.63	5.63	48.00	49.00	44.00	51.75	40	1.63	750
46	57.25	2.68	5.68	50.00	51.00	46.00	53.75	40	1.63	800
48	59.50	2.75	5.75	52.25	53.50	48.00	56.00	44	1.63	870
50	61.75	2.75	5.75	54.25	55.50	50.00	58.25	44	1.88	900
52	64.00	2.88	5.88	56.50	57.50	52.00	60.50	44	1.88	1000
54	66.25	3.00	6.00	58.75	59.75	54.00	62.75	44	1.88	1100
60	73.00	3.13	6.13	65.25	66.00	60.00	69.25	52	1.88	1350
66	80.00	3.38	6.38	71.50	-	66.00	76.00	52	1.88	1775
72	86.50	3.50	6.50	78.50	-	72.00	82.50	60	1.88	2100
84	99.75	3.88	6.88	90.50	-	84.00	95.50	64	2.13	2825
96	113.25	4.25	7.25	102.75	-	96.00	108.50	68	2.44	3800

1. Dimensions are in inches
2. Drilling template per ANSI B16.1

3. Purchaser needs to specify the bore.
4. Can also be furnished with flat face

Sumitec Int'l, Inc

Phone (877)-837-9618 Fax (866) 311-5335 email:sumitecsales@comcast.net

Large Diameter Flanges Through 260" Can Be Furnished.